

Thank you for your order!

We appreciate your business. Additional information on your product may be available on our website.



Happy?

Wonderful! We are very glad. Please share your experience with us and others. It helps us know what you like best!

- Review this product at www.householdessential.com.

Search the item # from the home page to find the product. Leave your review under the review tab on the product's page!

- Follow us on Facebook and Instagram!

Customer Service

1-800-922-5524 | 1-314-428-5657
info@householdessential.com

Open Mon-Fri at 8:30 am CT.
Closed all national holidays.



©2018 HOUSEHOLD ESSENTIALS, LLC
Hazelwood, MO 63042
www.householdessential.com



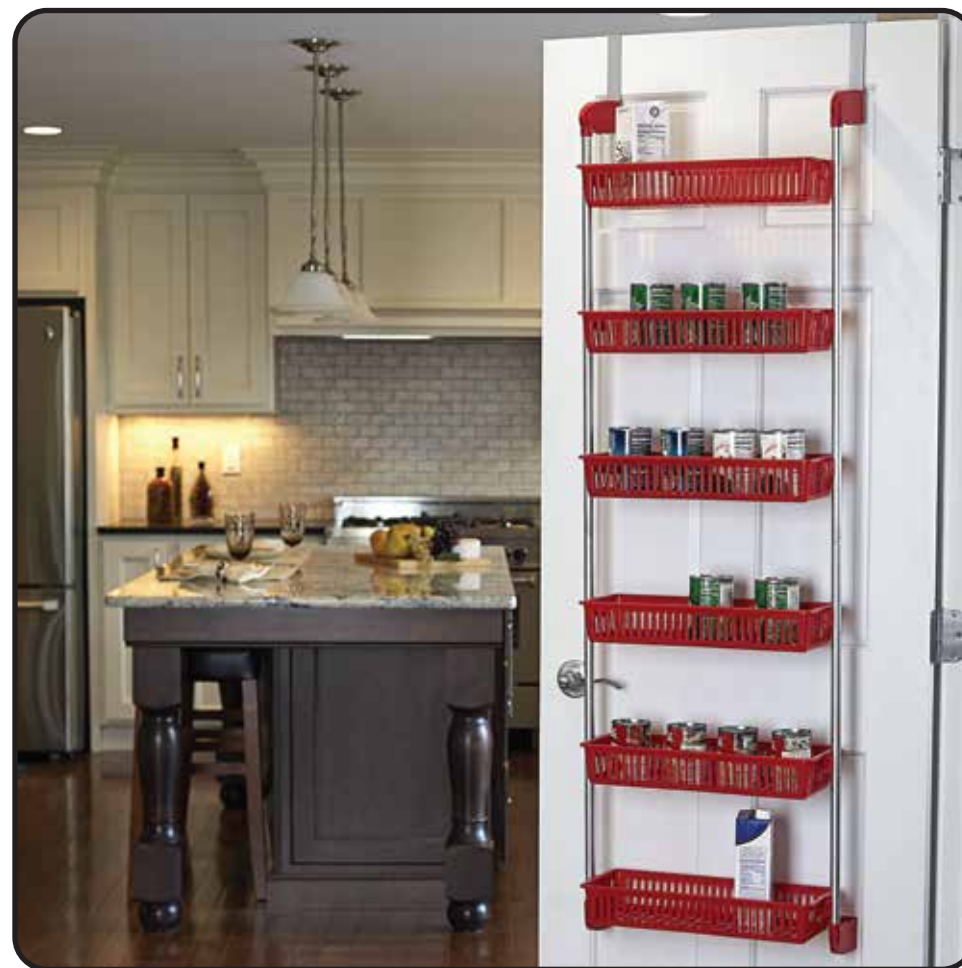
Not happy?

Please give our St. Louis customer service a call at 1-800-922-5524. We are here to help.

- Missing parts?
- Having trouble with assembly?

6-Basket Over-the-Door Organizer

2151 (lime), 2152 (orange)
2153 (red)

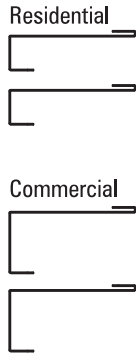


Parts

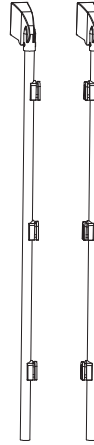
Ax6
Basket



Bx2

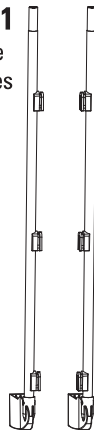


Cx1
Side Poles



Dx1
Side Poles

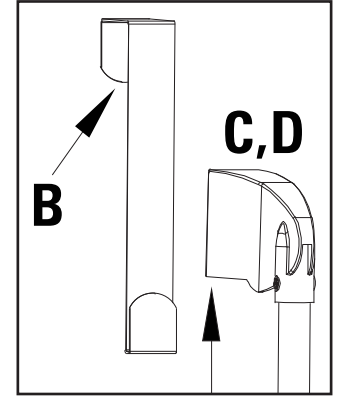
Ex1
Side Poles



Fx1
Side Poles

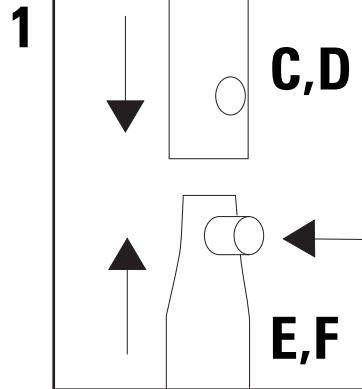
Assembly con't

- Slide door hooks firmly into the top plastic feet and hang on a door.



Assembly

- Connect side poles: Press in snap lock as it slides into the other pole, rotating the pole until the snap pops through opening.



- Attach baskets: Slide baskets over the upside down U-shaped anchors on the side poles until baskets click into place (helps to hold side frame and pull down on basket with thumbs).

TIP: Position baskets so that the longer portion of the basket is closest to the door.

