

STOW AWAY IRONING BOARD INSTALLATION INSTRUCTIONS:

TOOLS REQUIRED: Drill. 1/4" & 3/4" Drill Bit. Screwdriver. 7/16" Hexhead Socket & Wrench.

READ ALL INSTRUCTIONS BEFORE INSTALLATION.

STEP 1

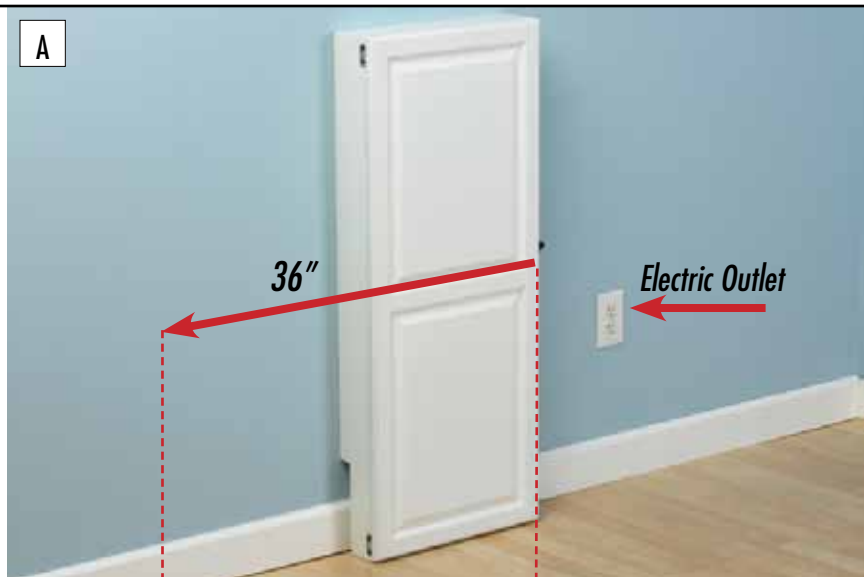
Select the location for the Stow Away to be installed.

NOTE: 36" of wall space is needed to accommodate the cabinet and sliding door. Also, be sure an electric outlet is within reach, so you can plug in an iron.

STEP 2

Place the Stow Away into desired position, snug against the wall.

CAUTION:
HOLD CABINET FIRMLY AGAINST WALL DURING
INSTALLATION PROCESS—TO PREVENT SLIDING



STEP 3

Slide the cabinet door open. Push the self-elevating release handle (located on the side of the cabinet) toward the back of the cabinet to raise the board.

STEP 4

Mark the location of the two pre-drilled holes in the cabinet onto the wall.

CAUTION:
DO NOT ADJUST BOARD HEIGHT UNTIL CABINET
HAS BEEN FULLY ANCHORED TO WALL.



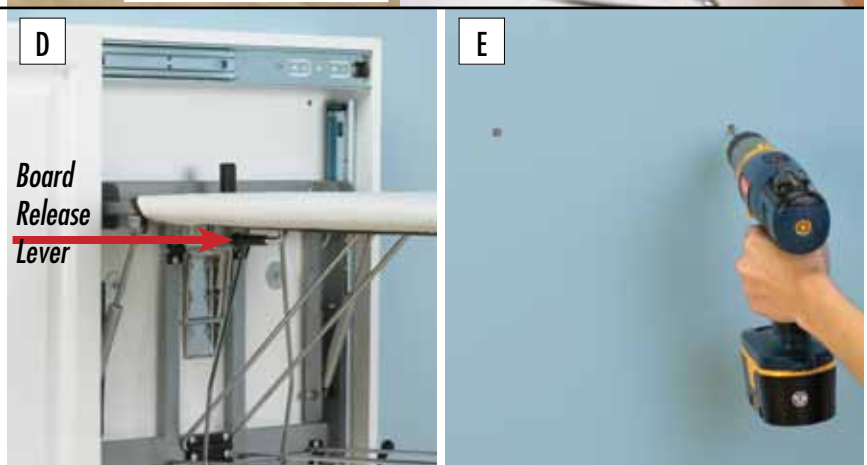
STEP 5

Return the board to a closed position by squeezing the board release lever (located on the underside of the ironing board) while pushing the nose of the board down until the board locks. Slide the cabinet door shut. Set cabinet aside.

NOTE: BOARD MUST BE RETURNED TO TOP MOST HEIGHT POSITION TO STORE & CLOSE DOOR.

STEP 6

Drill a small pilot hole at the two marked locations.



CONTINUED ON REVERSE...

U.S. Patent No. 7,278,229



©HOUSEHOLD ESSENTIALS

Hazelwood, MO 63042

1-800-922-5524

1-314-428-5657

www.householdessentials.com

REV. 4/11

STEP 7:

Determine the appropriate bolt to use for EACH pilot hole.

IF A STUD WAS HIT:

A "lag" bolt and washer should be used in the hole.

IF A STUD WAS NOT HIT:

A "butterfly" bolt and washer should be used in the hole.

STEP 8

IF A "LAG" BOLT IS TO BE USED:

Drill a 1/4" starter hole at the location of the pilot hole.

IF A "BUTTERFLY" IS TO BE USED:

Drill a 3/4" hole at the location of the pilot hole.



STEP 9

Place the Stow Away back into position, snug against the wall. Slide the cabinet door open and raise the board.

Align the predrilled holes in the cabinet with the holes drilled into the wallboard. Place a washer on each bolt.

NOTE: BE SURE TO SLIDE WASHERS ONTO BOLTS BEFORE INSERTING INTO WALL BOARD.

Slide bolts through the predrilled holes in the cabinet & into the holes in the wall board.

Tighten lag bolts with socket & wrench.

Tighten butterfly bolts with a screwdriver.



TO USE YOUR STOW AWAY IRONING BOARD:

TO OPEN BOARD:

1. Slide open the cabinet door. Push the self-elevating release handle toward back of the cabinet (FIGURE B). The board automatically rises and locks into position.
2. Adjust the height of the board by grasping the board firmly and pressing the height adjustment lever toward the wall (FIGURE H). Carefully slide board to any of four height positions. Release the lever to lock board in position.
3. Pull out built-in iron rest until fully extended (FIGURE J). Place iron on iron rest.

WARNING TO PREVENT DAMAGE TO WALL:

DO NOT LEAVE STEAM IRON IN IRON REST FOR EXTENDED PERIODS OF TIME.

TO CLOSE BOARD:

1. Remove iron and slide iron rest back to closed position.
2. Raise the board back to the *highest height position* by pressing the height adjustment lever toward the wall (FIGURE H). Carefully slide board to top height position. Release the lever to lock board.

NOTE: BOARD MUST BE IN TOP MOST HEIGHT POSITION TO STORE & CLOSE DOOR.

3. Return the board to a closed position by squeezing the board release lever (FIGURE D) while gently pushing the board down (FIGURE K) until it locks closed.
4. Slide cabinet door closed.



CAUTION:
**DO NOT LEAVE OPEN IRONING BOARD
AND IRON UNATTENDED**